

HANSA shut-off valve G1/2" SET ASV 2445100050



HANSA 2445100050

Product short description:

Shut-off valve 2xG1/2"
for HANSA safety valves KSV/ÜSV/XD or other
good valves with G1/2" connector

Dimension (LxWxH): 110x30x112 mm

Weight: 0,413 kg

Part-No.: 2445100050

Made in Germany

Product codes:

Reference: 2445100050

EAN13: 4251692921470

Product description:

Construction

Inlet A

Outlet B

Length H

Weight

Coating (base)

Operating pressure

Operating temperature

Standards and
Technical spec.

Suitable for

shut-off valve for safety valves

with G 1/2" connection

Connection of safety valve

freely positionable

G 1/2"

G 1/2" (1 1/4" possible for
Bitzer receiver / oil separator)

110 mm

0.413 kg plus 1x connection
nipples

Zn12/A/T2 according to DIN EN
ISO 2081

Additional powder coating
possible

45 bar (130 bar possible)

-30°C / 130°C or 200°C

(depending on the O-ring for
spindle)

DIN EN 378

Pressure Equipment Directive
2014/68 EU Art. 4 Para. 3

Fluids of group 1 (please ask for

Accessories included:

Optional accessories:

individual cases) & group 2
or safety class A2L.

For all common refrigerants
such as HFC, HFO, CFC except
those containing NH3

See list, also suitable for R290
and R744.

connection nipple 2700509050
G1/2" | G1/2" 42mm

copper sealing ring 2776854050
14x18x1 mm

Connection nipple 2700514050
G1/2" | G1/2" 62mm

Product features:

Material design: Steel

Connection: G1/2"

Pressure range: 45 bar

Authorised refrigerants: R403A

Authorised refrigerants: R453A

Authorised refrigerants: R414B

Authorised refrigerants: R744

Authorised refrigerants: R426A

Authorised refrigerants: R407H

Authorised refrigerants: R456A

Authorised refrigerants: R416A

Authorised refrigerants: R1233zd(E)

Authorised refrigerants: R427A

Authorised refrigerants: R407I

Authorised refrigerants: R458A

Authorised refrigerants: R417A

Authorised refrigerants: R1234ze(E)

Authorised refrigerants: R427B

Authorised refrigerants: R407A

Authorised refrigerants: R460A

Authorised refrigerants: R417B

Authorised refrigerants: R1336mzz(E)

Authorised refrigerants: R428A

Authorised refrigerants: R407B

Authorised refrigerants: R460B

Authorised refrigerants: R417C

Authorised refrigerants: R434A

Authorised refrigerants: R407C
Authorised refrigerants: R460C
Authorised refrigerants: R420A
Authorised refrigerants: R134a
Authorised refrigerants: R437A
Authorised refrigerants: R407D
Authorised refrigerants: R461A
Authorised refrigerants: R421A
Authorised refrigerants: R22
Authorised refrigerants: R438A
Authorised refrigerants: R407E
Authorised refrigerants: R463A
Authorised refrigerants: R421B
Authorised refrigerants: R30
Authorised refrigerants: R442A
Authorised refrigerants: R407F
Authorised refrigerants: R464A
Authorised refrigerants: R422A
Authorised refrigerants: R123
Authorised refrigerants: R448A
Authorised refrigerants: R449B
Authorised refrigerants: R1336mzz(Z)
Authorised refrigerants: R407G
Authorised refrigerants: R466A
Authorised refrigerants: R422B
Authorised refrigerants: R124
Authorised refrigerants: R449C
Authorised refrigerants: R455A
Authorised refrigerants: R408A
Authorised refrigerants: R468A
Authorised refrigerants: R422C
Authorised refrigerants: R245fa
Authorised refrigerants: R449A
Authorised refrigerants: R454C
Authorised refrigerants: R409A
Authorised refrigerants: R471A
Authorised refrigerants: R422D
Authorised refrigerants: R401B
Authorised refrigerants: R450A
Authorised refrigerants: R290
Authorised refrigerants: R409B
Authorised refrigerants: R513B
Authorised refrigerants: R422E

Authorised refrigerants: R401C
Authorised refrigerants: R452B
Authorised refrigerants: R600A
Authorised refrigerants: R410A
Authorised refrigerants: R513A
Authorised refrigerants: R423A
Authorised refrigerants: R401A
Authorised refrigerants: R452C
Authorised refrigerants: R410B
Authorised refrigerants: R514A
Authorised refrigerants: R424A
Authorised refrigerants: R402A
Authorised refrigerants: R402B
Authorised refrigerants: R452A
Authorised refrigerants: R414A
Authorised refrigerants: R515A
Authorised refrigerants: R425A

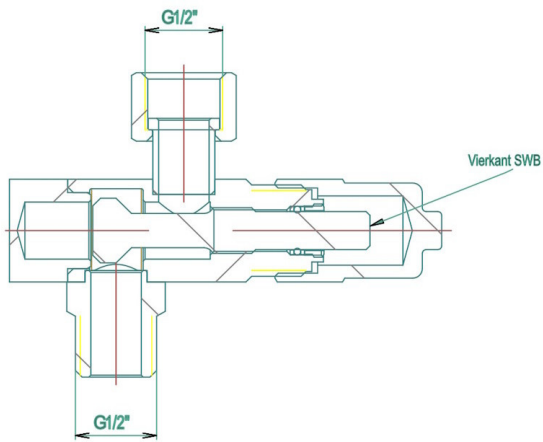
Product attributes:



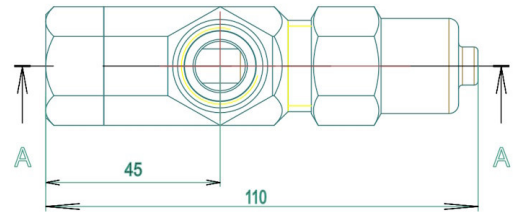
HANSA 2445100050
Sicherheitsventil nicht im Lieferumfang
Safety valve not included



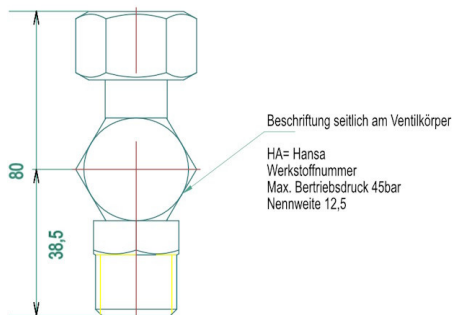
HANSA 2445100050
Sicherheitsventil nicht im Lieferumfang
Safety valve not included



HANSA 2445100050



HANSA 2445100050



HANSA 2445100050