

HANSA Filter drier sight glass combination steel HMK083 sm SG_2837510050



Product short description:

Filter drier sight glass combination steel
HMK083 sm SG
60 bar
Dimension (LxWxH): 188x52x52 mm
Weight: 0,469 kg
Part-No.: 2837510050

Made in Germany

Product codes:

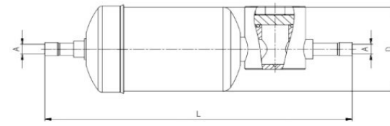
Reference: 2837510050
EAN13: 4251692918777

Product description:

HANSA filter drier combis a compact steel version with copper pipes as solder connections. Time-saving assembly and full insight during maintenance, as the familiar sight glass sizes are used. For the system supplier, here comes the ideal complement: combis with solder connection and large sight glass in a steel housing. The space-saving and lighter design of the combis allows the manufacturer to make his systems more compact. No compromises were made in the sight glass itself. The diameter of the glass is the same as that of the other units, and it can be supplied with or without an indicator. Made in Germany

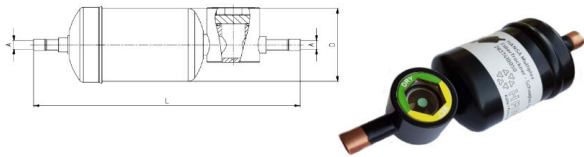
Product features:

Product attributes:



HANSA Artikeliste Multiplex - Kombis Lötanschluss

Beschreibung		Maße				Gewicht	P max.
Typ	HANSA Best. Nr.	für Rohr ø	A	D	L +/-3mm	kg	bar
		mm	mm	mm	mm		
Multiplex Kombi Stahl HMK082 sm FI	2837406050	6	6,1	52	172,0	0,47	60
Multiplex Kombi Stahl HMK083 sm FI	2837410050	10	10,1	52	188,0	0,47	60
Multiplex Kombi Stahl HMK084 sm FI	2837412050	12	12,1	52	180,0	0,48	60
Multiplex Kombi Stahl HMK162 sm FI	2838406050	6	6,1	75	182,0	0,71	55
Multiplex Kombi Stahl HMK163 sm FI	2838410050	10	10,1	75	198,0	0,72	55
Multiplex Kombi Stahl HMK164 sm FI	2838412050	12	12,1	75	191,0	0,72	55
Multiplex Kombi Stahl HMK082 sm SG	2837506050	6	6,1	52	172,0	0,47	55
Multiplex Kombi Stahl HMK083 sm SG	2837510050	10	10,1	52	188,0	0,47	60
Multiplex Kombi Stahl HMK084 sm SG	2837512050	12	12,1	52	180,0	0,47	60
Multiplex Kombi Stahl HMK162 sm SG	2838506050	6	6,1	75	182,0	0,71	60
Multiplex Kombi Stahl HMK163 sm SG	2838510050	10	10,1	75	198,0	0,71	55
Multiplex Kombi Stahl HMK164 sm SG	2838512050	12	12,1	75	191,0	0,71	55



Beschreibung		Empfohlen bis Kälteleistung					Wasseraufnahmefähigkeit bei 25°C gemessen nach ARI-Standard 710-86				
		R134a R1234	R404A R507A	R407C	R410A	R449A R452A	R134a R1234	R404A R507A	R407C	R410A	R449A R452A
Typ	HANSA Best. Nr.	KW	KW	KW	KW	KW	g	g	g	g	g
Multiplex Kombi Stahl HMK082 sm FI	2837406050	13,00	9,00	14,50	14,50	9,00	12,2	13,9	12,2	12,0	12,1
Multiplex Kombi Stahl HMK083 sm FI	2837410050	13,00	9,00	14,50	14,50	9,00	12,2	13,9	12,2	12,0	12,1
Multiplex Kombi Stahl HMK084 sm FI	2837412050	13,00	9,00	14,50	14,50	9,00	12,2	13,9	12,2	12,0	12,1
Multiplex Kombi Stahl HMK162 sm FI	2838404050	23,00	16,00	25,00	25,00	16,00	19,2	21,9	19,2	19,0	19,2
Multiplex Kombi Stahl HMK163 sm FI	2838410050	23,00	16,00	25,00	25,00	16,00	19,2	21,9	19,2	19,0	19,2
Multiplex Kombi Stahl HMK164 sm FI	2838412050	23,00	16,00	25,00	25,00	16,00	19,2	21,9	19,2	19,0	19,2
Multiplex Kombi Stahl HMK082 sm SG	2837506050	13,00	9,00	14,50	14,50	9,00	12,2	13,9	12,2	12,0	12,1
Multiplex Kombi Stahl HMK083 sm SG	2837510050	13,00	9,00	14,50	14,50	9,00	12,2	13,9	12,2	12,0	12,1
Multiplex Kombi Stahl HMK084 sm SG	2837512050	13,00	9,00	14,50	14,50	9,00	12,2	13,9	12,2	12,0	12,1
Multiplex Kombi Stahl HMK162 sm SG	2838506050	23,00	16,00	25,00	25,00	16,00	19,2	21,9	19,2	19,0	19,2
Multiplex Kombi Stahl HMK163 sm SG	2838510050	23,00	16,00	25,00	25,00	16,00	19,2	21,9	19,2	19,0	19,2
Multiplex Kombi Stahl HMK164 sm SG	2838512050	23,00	16,00	25,00	25,00	16,00	19,2	21,9	19,2	19,0	19,2